



MSC Assessment

Zhangzidao Scallop (*Patinopecten yessoensis*) Fishery, North Yellow Sea China

We are pleased to announce that the MSC fishery certification assessment is underway for the Zhangzidao Japanese Scallop (*Patinopecten yessoensis*) Fishery. This assessment will evaluate this fishery for compliance with the Marine Stewardship Council Principles and Criteria for Sustainable Fishing. The certification body contracted to assess this fishery is Intertek Moody Marine.

The fishery under assessment is defined here as the Zhangzidao, Japanese Scallop Fishery. The client for the assessment is Dalian Zhangzidao Fishery Group.

The provisional assessment schedule sets out the key stages and approximate timings involved. Initially, Intertek Moody Marine seeks to open a dialogue with all organisations or individuals with a direct interest in this fishery. Anyone wishing to become a consultee 'stakeholder', to nominate other organisations/individuals as stakeholders or to provide comments or information to the assessment process (in terms of the status of the stock, ecosystem interactions or fishery management practices) is invited to contact Intertek Moody Marine. The assessment schedule identifies future key consultation stages (marked in red). For reference, month 1 is taken to be September 2011. The target date for certification of the fishery is October 2012.

If you wish to provide comment at any stage of the assessment process the MSC have provided a template for stakeholders to complete and submit their comments. This can be downloaded from the following link:
<http://www.msc.org/documents/scheme-documents/forms-and-templates/msc-template-for-stakeholder-input-into-fishery-assessments/view>

We are also in the process of assembling an assessment team of individuals with experience of stock assessment, ecosystem interactions and fishery management appropriate to this fishery. Any nominations of suitable individuals are also welcomed.

The Contact details for Intertek Moody Marine are:

Paul Knapman
Project Manager
Phone : + 1 902 422 4511
Fax: + 1 902 422 9780
Email: P.knapman@moodyint.com

Jo Akroyd
Lead Auditor
Phone: + 64 21 782434
Fax: + 64 9 5247903
Email: j.akroyd@moodyint.com

Anthony Lidong Liang
Scheme Manager, Intertek Moody, China
Phone: +86 532 85918811
Fax: +86 532 8591 8813
Email: a.liang@moodyint.com

Intertek Moody Marine
Merlin House
Stanier Way
Wyvern Business Park
Derby. DE21 6BF
Telephone: +44 (0) 1332 544663
Fax: +44 (0) 1332 675020
Email: info@moodyint.com
Web Site: www.moodyint.com



MSC Assessment

Zhangzidao, Japanese Scallop Fishery

Assessment Schedule

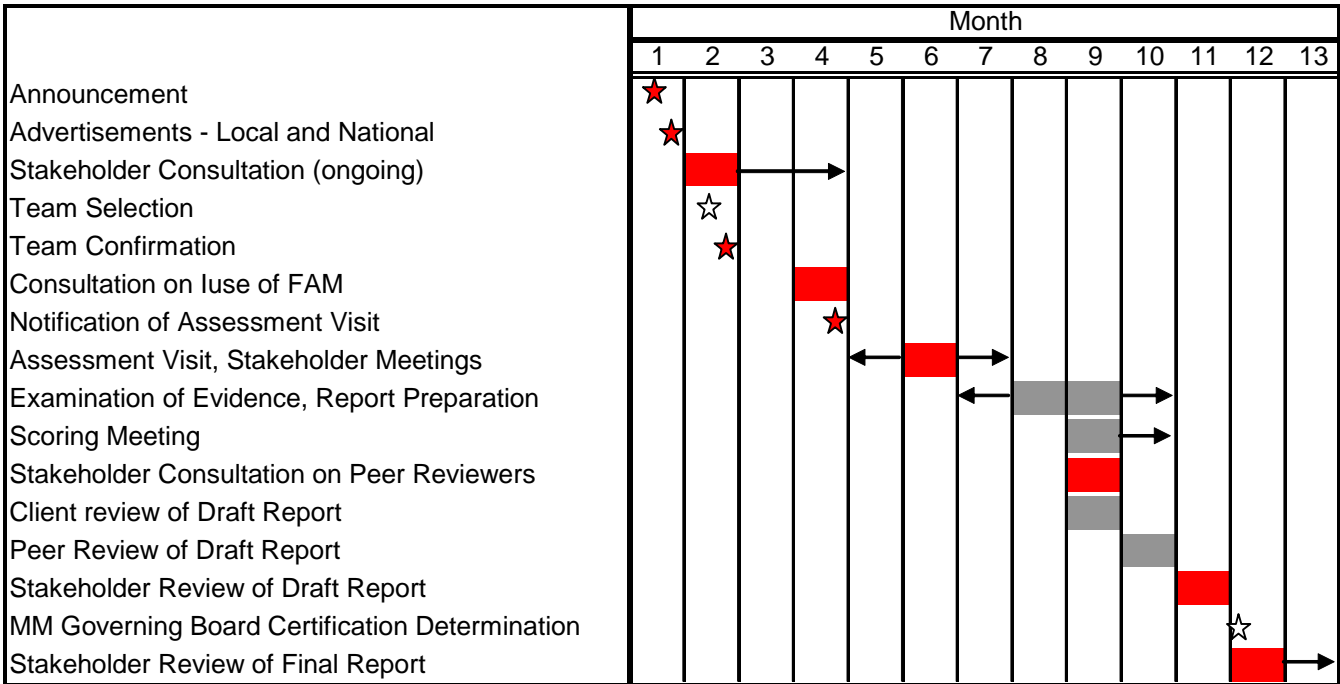
MSC assessments proceed through a prescribed series of stages. Assuming no delays, an assessment typically takes 12 months, but may be completed within a minimum of 9 months, or may take considerably longer if delays are encountered.

The main sequence of activities is set out below, with the time required for each stage. A delay at any stage will extend the overall timeframe accordingly.

Month	Stage	Time required
1	Notification of assessment commencement	5 days
2	Assembling of expert team	Variable
3	Stakeholder consultation on expert team	10 days
4	Confirmation of use of standard Performance Indicators and Scoring Guideposts	30 days
5	Announcement of Site Visit	30 days
6	Assessment Visit	1 week
7	Production of report and scoring of fishery	2 months
8	Consultation on peer reviewers	10 days
9	Client review of Draft Report (version 1)	30 days
10	Peer review of Draft Report (version 2)	30 days
11	Stakeholder review of Draft Report (version 3)	30 days
12	Moody Marine internal certification determination	5 days
13	Stakeholder consultation on Final Report (version 4) and Determination	21 days
14	Issuance of Public Certification Report (version 5)	5 days

A typical sequence of a main assessment is illustrated below.

Intertek Moody Marine
Merlin House
Stanier Way
Wyvern Business Park
Derby. DE21 6BF
Telephone: +44 (0) 1332 544663
Fax: +44 (0) 1332 675020
Email: info@moodyint.com
Web Site: www.moodyint.com



Intertek Moody Marine
 Merlin House
 Stanier Way
 Wyvern Business Park
 Derby. DE21 6BF
 Telephone: +44 (0) 1332 544663
 Fax: +44 (0) 1332 675020
 Email: info@moodyint.com
 Web Site: www.moodyint.com